

# MONTHLY MEMBERSHIP PROGRESS REPORT

LOCATION OHIO

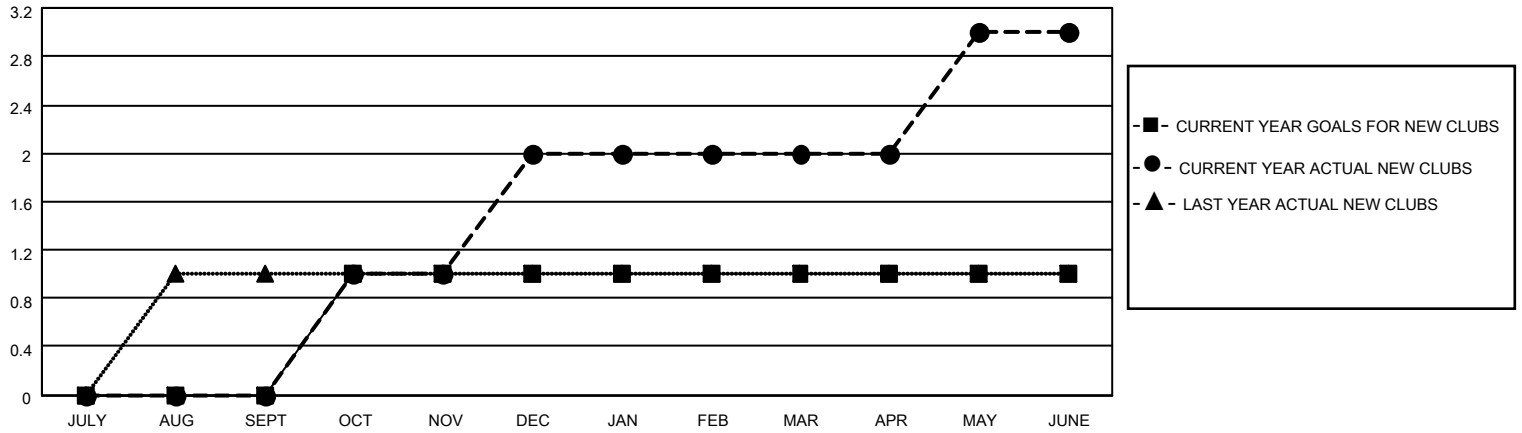
District 13 OH2

Results as of: 6/30/2021

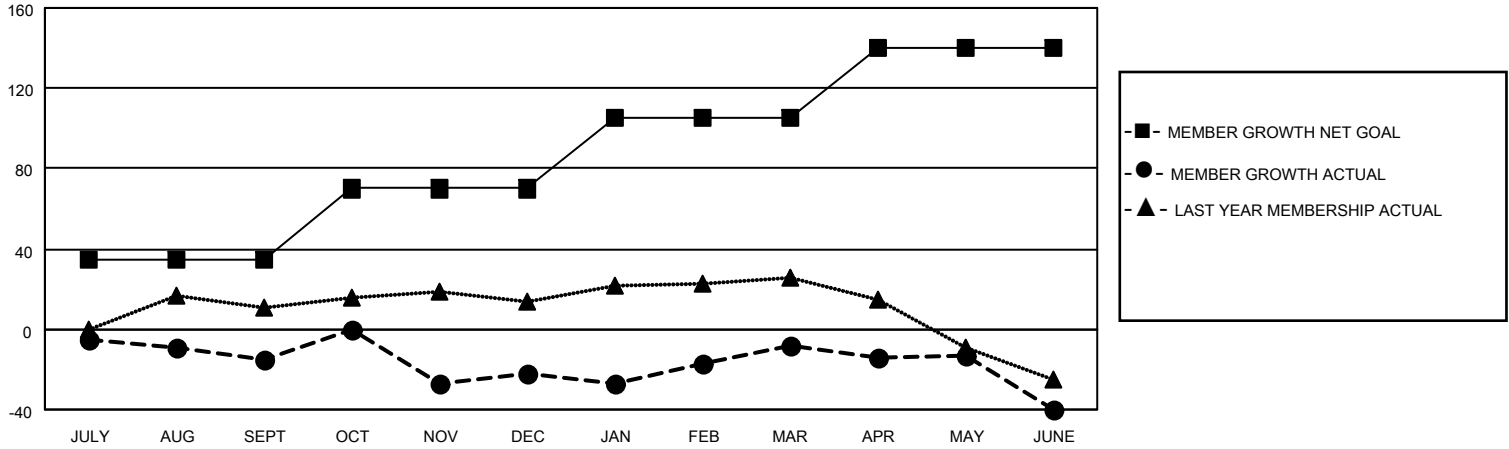
Clubs			
RESULTS FOR 2020-2021			
QUARTER	NEW CLUB GOAL	NEW CLUBS	DROPPED CLUBS
JULY/AUG/SEPT	0	0	0
OCT/NOV/DEC	1	2	0
JAN/FEB/MAR	0	0	0
APR/MAY/JUNE	0	1	0

Members			
RESULTS FOR 2020-2021			
QUARTER	MEMBER GROWTH NET GOAL	MEMBER GROWTH ACTUAL	DROPPED MEMBERS ACTUAL (including transfers)
JULY/AUG/SEPT	35	20	31
OCT/NOV/DEC	35	77	77
JAN/FEB/MAR	35	39	23
APR/MAY/JUNE	35	41	66

**GOALS AND ACTUAL NEW CLUBS CUMULATIVE**



**GOALS AND ACTUAL MEMBERS CUMULATIVE**



**DROPPED CLUBS: 0**

**33 CLUBS OF 58 ADDED 1 OR MORE NEW MEMBERS**

**GENDER DISTRIBUTION**

MALE 1,220 (70.44%)  
FEMALE 512 (29.56%)

**DROPPED MEMBERS**

DECEASED	28
CLUB CANCELLED	0
OTHER	170
<b>TOTAL</b>	<b>198</b>

[CLICK HERE FOR CUMULATIVE MEMBERSHIP DATA](#)

TOTAL FAMILY UNIT MEMBERS	377
FAMILY MEMBERS PAYING HALF DUES	192